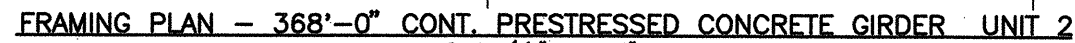


COMPANY\1999 JOBS\99-044 AHTD\WHITERIVER\JOB 110395\368 Girder Units 2-3 ACAD SCALE: 1/16"=1'-0"



Scale:  $\frac{1}{16}" = 1'-0"$

**Station 279+04 to Station 282+72 (One Unit Required)**



ALTERNATE NO. 1

DETAILS OF 284', 330' & 368' CONT.  
PRESTRESSED CONCRETE GIRDER UNITS  
(SHEET 2 OF 19)

WHITE RIVER STR. & APPRS.  
(CLARENDON) (PH III) (F)  
MONROE COUNTY

ROUTE 79 SEC. 13

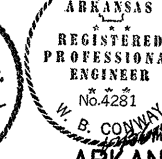
ARKANSAS STATE HIGHWAY COMMISSION  
LITTLE ROCK, ARK.

Engstrom/Modjeski and Masters, Inc.

FRAMING PLAN - 368'-0" CONT. PRESTRESSED CONCRETE GIRDER UNIT 3

Scale:  $\frac{1}{16}'' = 1'-0''$

Station 282+72 to Station 286+40 (One Unit Required)



DRAWN BY: YJ DATE: Nov. 07 FILENAME: b11039512\_s02  
 CHECKED BY: JES DATE: Nov. 01 SCALE: 1/16"=1'-0"  
 DESIGNED BY: YJ DATE: Nov. 01

BRIDGE NO. 06830 DRAWING NO. 47064

BRIDGE NO. 06830 DRAWING NO. 47064

BRIDGE NO. 06830 DRAWING NO. 47064